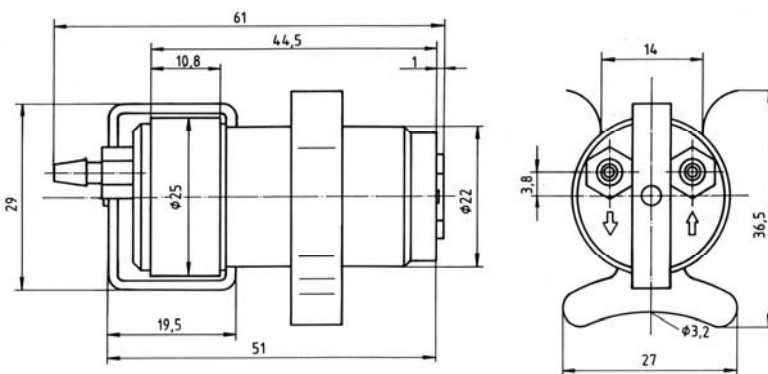




DC../08-18F



CE	Tabelle table	Spannung voltage V	Strom current		Volumenstrom flow l/min	Vakuum Vacuum -mbar	Gewicht weight g [N]
			min. mA	max.			
Typ/Model: Art.-Nr./art. no.:	DC06/08F 13511	6	140	220	1,3	120	102 [1,02]
Typ/Model: Art.-Nr./art. no.:	DC06/16F 13737	6	210	440	3,0	230	
Typ/Model: Art.-Nr./art. no.:	DC06/18F 13815	6	270	480	4,0	200	
Typ/Model: Art.-Nr./art. no.:	DC09/16F 14733	9	190	390	3,2	270	
Typ/Model: Art.-Nr./art. no.:	DC09/18F 14734	9	270	470	4,5	220	
Typ/Model: Art.-Nr./art. no.:	DC24/08F 16513	24	40	65	1,5	140	
Typ/Model: Art.-Nr./art. no.:	DC24/16F 16713	24	60	110	3,0	200	
Typ/Model: Art.-Nr./art. no.:	DC24/18F 16813	24	80	120	4,0	160	

