

Innovation in Gas Analysis

JC-14 and JC-24 19"-Gas Conditioning Systems



APPLICATION

- For extractive gas analysis
- For emission and process monitoring
- Continuous sample gas conditioning of humid process gases
- Continuous drying of sample gas to a precise low and constant outlet dew point
- Minimises water vapour cross sensitivities and volumetric errors

BENEFITS

- Complete solution in 19"-housing for a great number of applications
- No expensive individual part mounting
- Guaranteed sustainable reproducible measuring results
- Optimum operational safety due to self-monitoring
- Extremely precise long term stable dew point even under varying loads
- Fast response time due to low dead volume
- Continuous condensate removal
- Low maintenance operation
- Easy to maintain design

FEATURES

- Individual configuration due to extension options
- Basic device with Peltier-sample gas cooler
- 1 or 2 independent sample gas paths
- Digital temperature indication, status-LED's
- Integrated condensate pump
- Easy to maintain robust fine dust filter
- Corrosion resistant flowmeter with precise needle valve
- Status contact
- Extension options:
 - High performance corrosion resistant sample gas pump
 - Reliable condensate monitoring
 - 2/3-way solenoid valve to shut off in case of failure or after switching off the sample gas pump
 - Ball valve for calibration gas feeding



JCT

Analysentechnik
GmbH

Gas Sampling Probes

Heated Sample Lines

Sample Gas Coolers

Condensate
Treatment

Accessories

Gas Conditioning
Systems

Sample Gas
Converters

MADE IN AUSTRIA



www.jct.at

TECHNICAL DATA

Model	JC-14	JC-24
Description	19" sample gas conditioning systems	
Cooling principle	Peltier cooling	
Number of gas paths	1	2

Operation

Gas flow*	max. 240 NI/hr	max. 2 x 240 NI/hr
Gas temperature inlet*	max. +150°C	
Dew point inlet*	max. +70°C	
Dew point outlet	+5°C	
Dew point stability (for constant inlet conditions)	±0,2K	
Ambient temperature	+5...+40 °C	
Cooling capacity per gas path	>15 W	
Operating pressure	0,2...2,2 bara	
Ready for operation	< 15 min.	
Pressure drop at max. flow rate	5 mbar	

Construction

Dimensions over all (W x H x D)	483 x 266 x 425 mm	
Installation	19"-rack or stand alone	
Mounting position	horizontal	
Weight (dependent on configuration)	ca. 9 - 11 kg	ca. 14 - 16 kg
Housing, colour	aluminium, natural anodised	
Material heat exchanger	PVDF	
Dead volume per gas path	50 ml	
Connection sample gas / condensate outlet	PVDF hose fitting DN 4/6 mm (stainless steel fitting 6mm optional)	
Approvals / signs	CE	

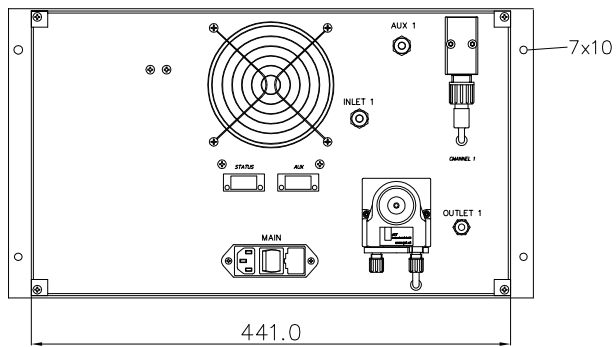
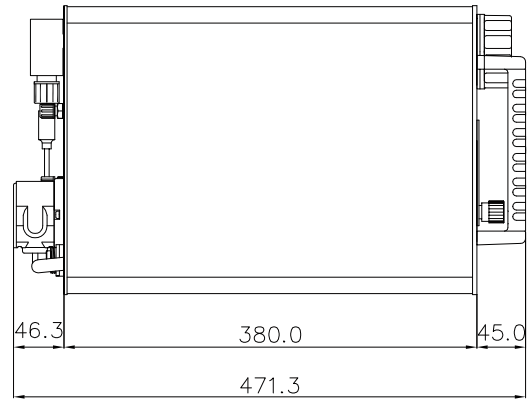
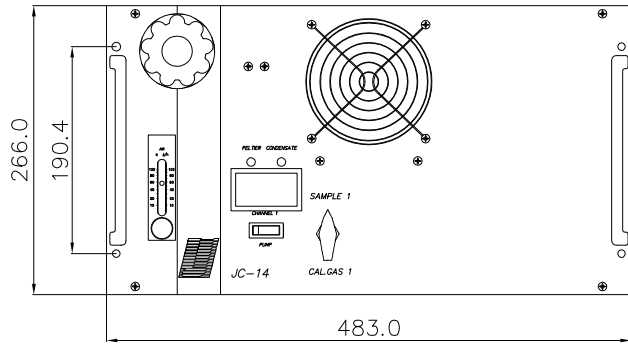
Electrics

Power supply	230 VAC 50/60 Hz or 115 VAC 50/60 Hz ±10 %	
Power consumption (depending on load, ambient temperature and configuration)	30....160 VA	60....320 VA
Connection power / status signal	IEC device socket / CEE 7/7 to IEC plug, 2m cable	
Fusing (in IEC device socket)	lead fuse T2A	lead fuse T5A
Protection class	IP 20 (EN 60529)	
On - time	100 %	
Alarm set points	<0 / >+10°C	
Alarm delay	0,5 sec.	
Status relay	voltage free change over contact	
Switching capacity relay	max. 250 VAC / 2 A; min. 5 VADC 5 mA	
Connection status relay	spring clips 0,08 mm ² - 2,5 mm ²	

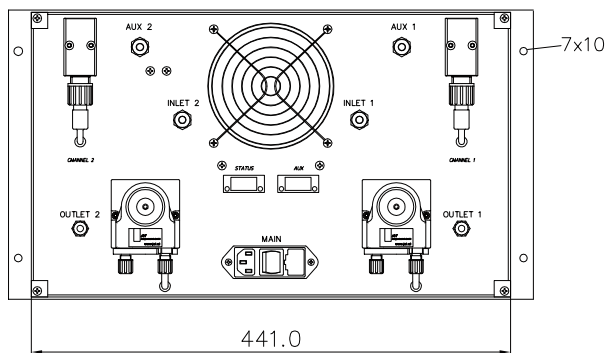
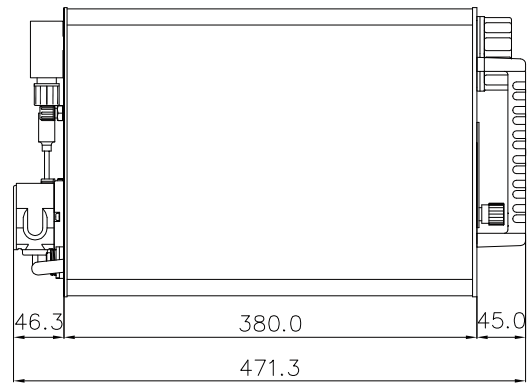
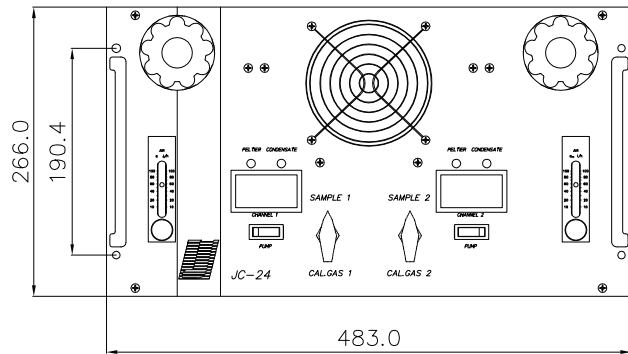
* Results from the effective cooling capacity at 25°C ambient temperature and 3°C outlet dew point and can be influenced by further operational parameters

DIMENSIONS

JC-14



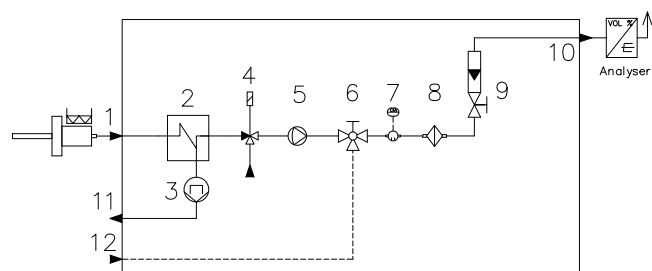
JC-24



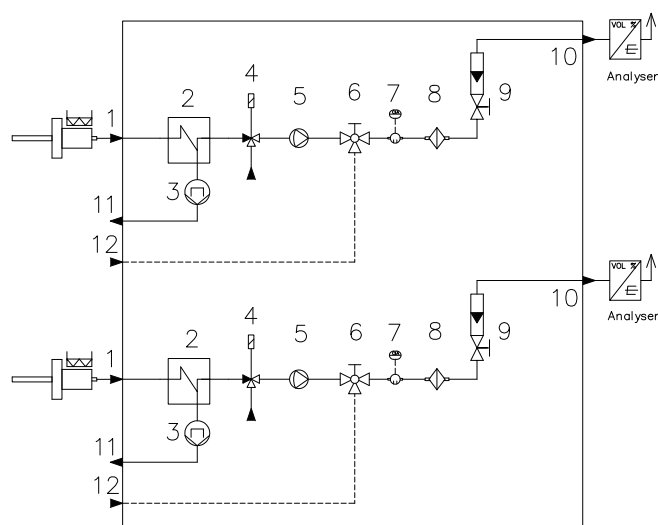
Dimensions in mm

GAS FLOW DIAGRAMS

JC-14



JC-24



1	Sample gas inlet
2	Gas heat exchanger
3	Condensate pump
4	Solenoid valve (option)
5	Sample gas pump (option)
6	2/3-way ball valve (option)

7	Condensate sensor KW-1 (option)
8	Sample gas filter
9	Flow meter with needle valve
10	Sample gas outlet
11	Condensate outlet
12	Calibration gas inlet (option)

ORDER CODES

Part number	Description
12.21010	JC-14, 230 VAC 50/60Hz
12.21011	JC-14, 115 VAC 50/60Hz
12.20010	JC-24, 230 VAC 50/60Hz
12.20011	JC-24, 115 VAC 50/60Hz

Options

12.00003	Gas inlet with stainless steel fitting 6 mm, SS316
12.00066	Condensate monitoring KW-1
12.00021	2/3-way solenoid valves 230 VAC 50/60 Hz
12.00021S	2/3-way solenoid valves 115 VAC 50/60 Hz
12.00015	Sample gas pumps 230 VAC 50/60 Hz
12.00015S	Sample gas pumps 115 VAC 50/60 Hz
On request	Calibration gas connection with 2/3-way ball valve

JCT Analysentchnik GmbH

Werner Heisenberg-Straße 4 A-2700 Wiener Neustadt
 Tel. +43 (0) 2622 / 87201 Fax +43 (0) 2622 / 872011
 E-Mail: sales@jct.at Web: www.jct.at

